

10M Toilet Trailer

Specification

Dimensions:	1000*220*280cm
Color:	RAL5026
Electrical:	220V/50HZ
Net Weight:	4,000kg
Gross Weight:	4,000kg
Max. Load Weight:	7,500kg
Tyre Size:	235/75R15LT
Material:	Frame: Galvanized steel Exterior wall: Fiberglass honeycomb panels Insulation Interior wall: ACM Floor: Marble SPC floor
Accessory:	88cm safety chain Trailer hitch ball Trailer coupler Independent trailer suspension Trailer stabilizers Heavy-duty trailer jack with wheel Door stop Trailer connector Fold-out Handrails Slide-out trailer stairs Entry doors Trailer brake Ceiling air conditioners Restroom signs Door closers Music systems
Electrical System:	EU-compliant electrical fixtures Electrical panel board Circuit breaker Standard power sockets generator receptacles

Lighting:	Interior lights Trailer tail lights Trailer side lights Toilet occupied indicator lights Mirror lights
Water Sink Kits:	Porcelain sinks Touchless faucets
Water Supply System:	3500L clean water tank 3500L holding tank Water pumps Water pressure tank Water tank level indicators
Equipment:	Mirrors Porcelain toilets Porcelain urinals Exhaust fans Trash cans Wall-mounted soap dispensers wall mounted tissue boxes Toilet paper holders Ventilation fans
Warranty:	1 year warranty for free
<p>For more information on this model, such as size options, pricing, standard configurations, customization and upgrades, production time, delivery terms, etc., please email sales@etofoodcarts.com. Our sales agent will contact you within a day or even sooner to address any inquiries you may have.</p>	

Details



- Front -



- Side -



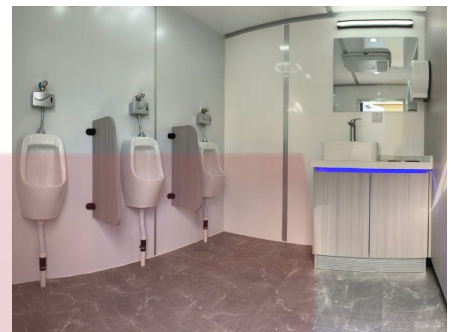
- Side -



- Side -



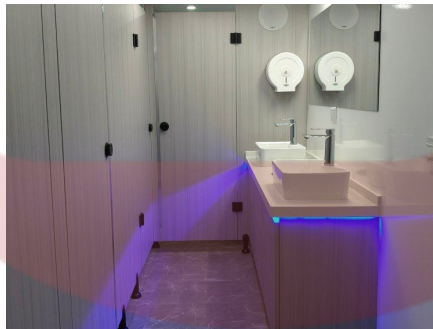
- Rear -



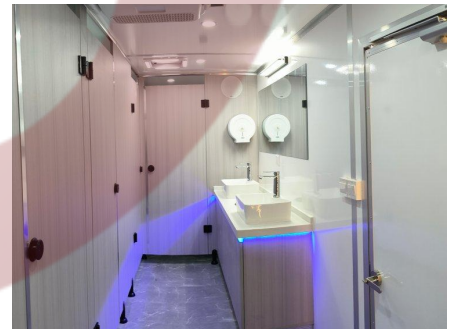
- Men's Room -



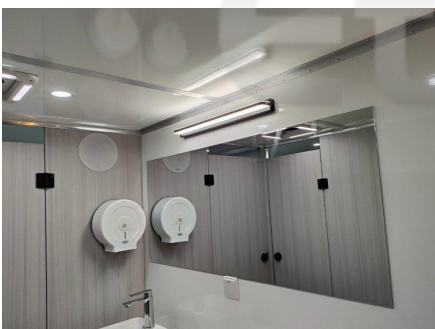
- Men's Room -



- Women's Room -



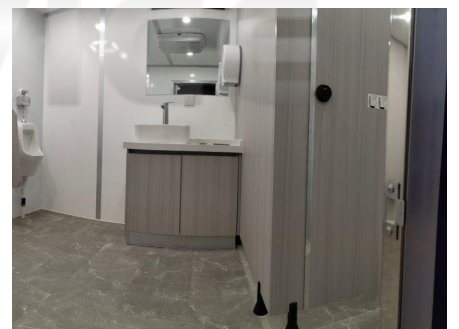
- Women's Room -



- Mirror -

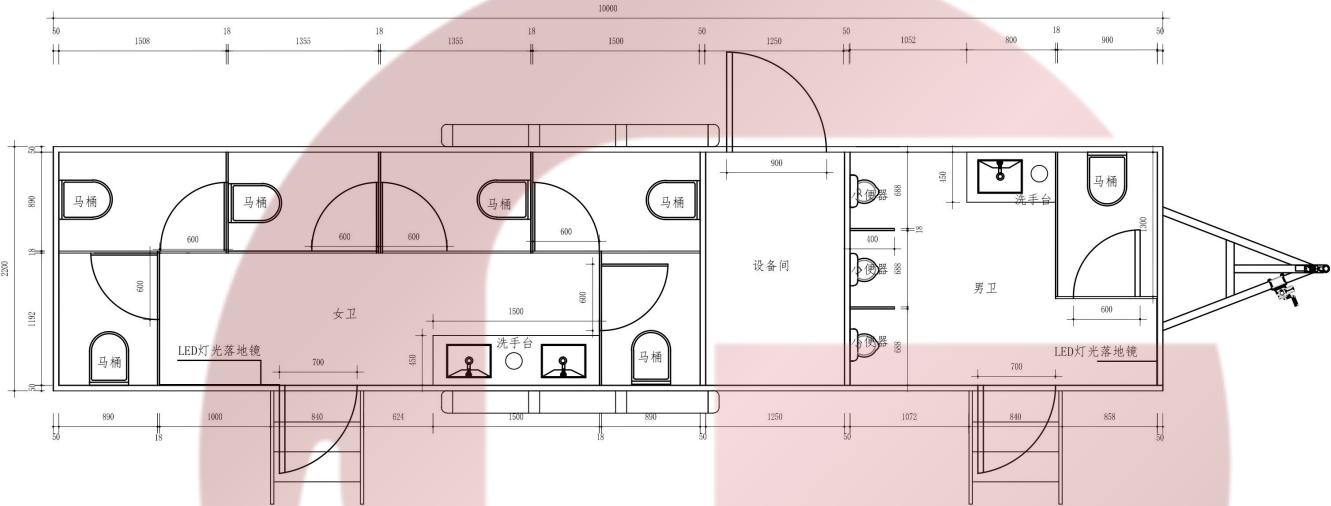


- Sins -



- Interior -

Floor Plan



Etodevice

Design

